

202

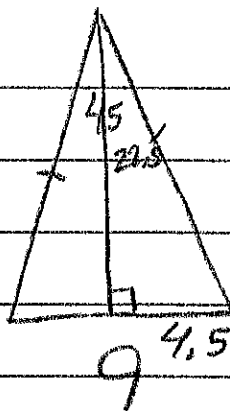
11.3

key

p613

8. $72 \div 8 = 9$

$$360 \div 8 = 45$$



$$\tan 22.5 = \frac{4.5}{a}$$

$$a = 10.9$$

$$A = \frac{1}{2} 10.9 (72)$$

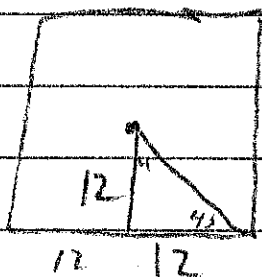
$$391.1 \text{ in}^2$$

9. side = $21\sqrt{2}$

$$(21\sqrt{2})^2$$

$$= 882 \text{ m}^2$$

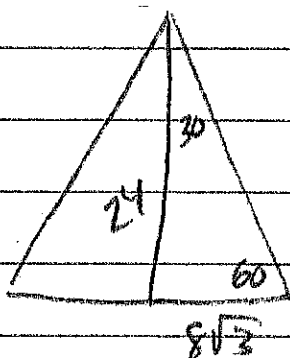
10.



$$\text{side} = 24$$

$$A = 576 \text{ cm}^2$$

11.



30	60	90
x	$8\sqrt{3}$	2x
$8\sqrt{3}$	24	

$$P = 16\sqrt{3} \cdot 6$$

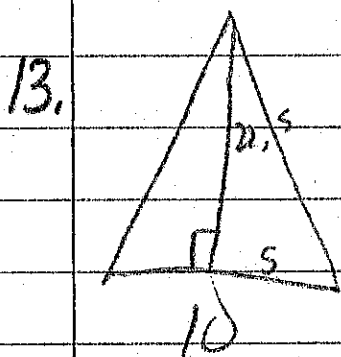
$$A = \frac{1}{2} 24 \cdot 96\sqrt{3}$$

$$= 1152\sqrt{3} \text{ in}^2$$

$$1995.3 \text{ in}^2$$

$$16\sqrt{3}$$

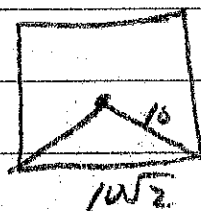
12.
$$\frac{15.5^2 \sqrt{3}}{4} = 104.0 \text{ in}^2$$



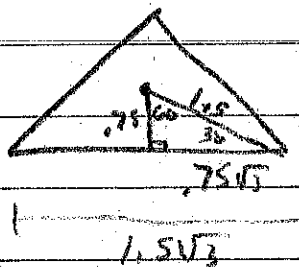
$\tan 22.5 = \frac{5}{a}$
 $a \approx 12.1$

$A = \frac{1}{2} 80 (12.1)$
 482.8 km^2

14. Circle - Sq
 $100\pi - \frac{(10\sqrt{2})^2}{2}$
 114.2 m^2



16. Circle - Δ
 $1.5^2 \pi - \frac{(1.5\sqrt{3})^2 \sqrt{3}}{4}$
 2.92
 4.1 m^2



30. $C = 34\pi$
 $d = 34$
 $r = 17$

$A = 289\pi$
 907.9 m^2